

**WELCOME**



PATHWAY TO OUR FUTURE  
**GUILDERLAND COMPREHENSIVE PLAN**



**Open House**  
&  
**Visioning Workshop**

**March 20, 2023 7:00 PM to 9:00 PM**



# WHAT IS A COMPREHENSIVE PLAN?

A Comprehensive Plan is both a vision for the future and a blueprint for how to get there. A Comprehensive Plan creates a framework for future decision-making on a range of topics such as land use, economic development, infrastructure, and housing. The Town of Guilderland adopted its current Comprehensive Plan in 2001, and the update process will help guide Guilderland into the future.

The planning process is being led by the Guilderland Comprehensive Plan Update Committee and facilitated by Town staff and a consultant team led by MJ Engineering and Land Surveying and supported by E.M. Pemrick & Company and Community Planning and Environmental Associates.

## COMPREHENSIVE PLAN UPDATE COMMITTEE

- ❖ Jim Abbruzzese
- ❖ Cody Betton
- ❖ Richard Brustman
- ❖ Tara Cristalli
- ❖ Caitlin Ferrante
- ❖ Lisa Hart
- ❖ Elizabeth Lott
- ❖ Dominic Rigosu
- ❖ Stephen O. Wilson



## Guilderland Population: 36,976

Source: US Census estimate (2021)

### Population Growth 2010-2020

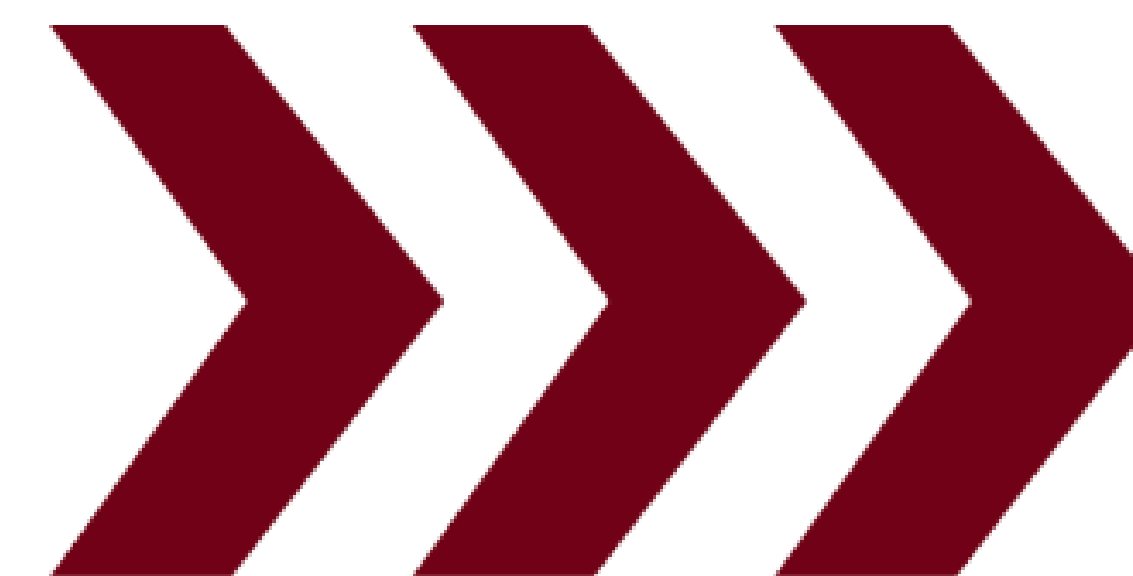
	2010	2020	2010-2020 % Change	Population Difference
Town of Guilderland	35,303	36,848	4.4%	1,545
Albany County	304,032	314,848	3.6%	10,816
New York State	19,378,102	20,201,249	4.2%	823,147



- ❖ Guilderland's population grew by 1,545 people between the 2010 and 2020 US Census counts.
- ❖ The percentage increase in population (4.4%) was slightly higher than the rate for NY State.

### Age Groups in Guilderland - Comparison

	Preschool 0-4	School Age 5-17	College Age 18-24	Young Adult 25-44	Adult 45-64	Older Adult 65+
Guilderland	4.9%	13.6%	14.2%	23.3%	25.2%	18.8%
NY State	5.7%	15.2%	9%	27.2%	26.3%	16.6%
U.S.	5.9%	16.6%	9.2%	26.5%	25.6%	16%

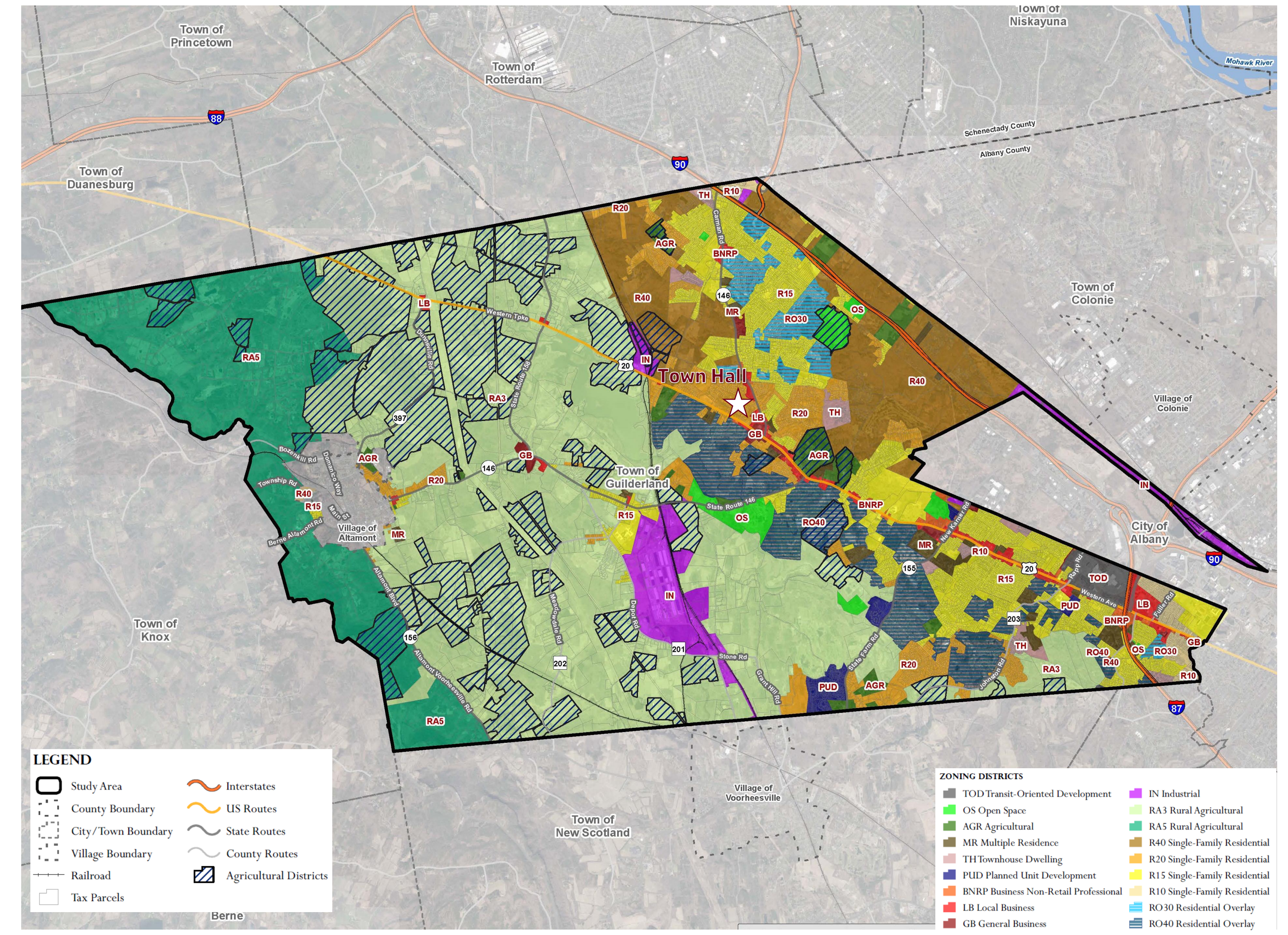
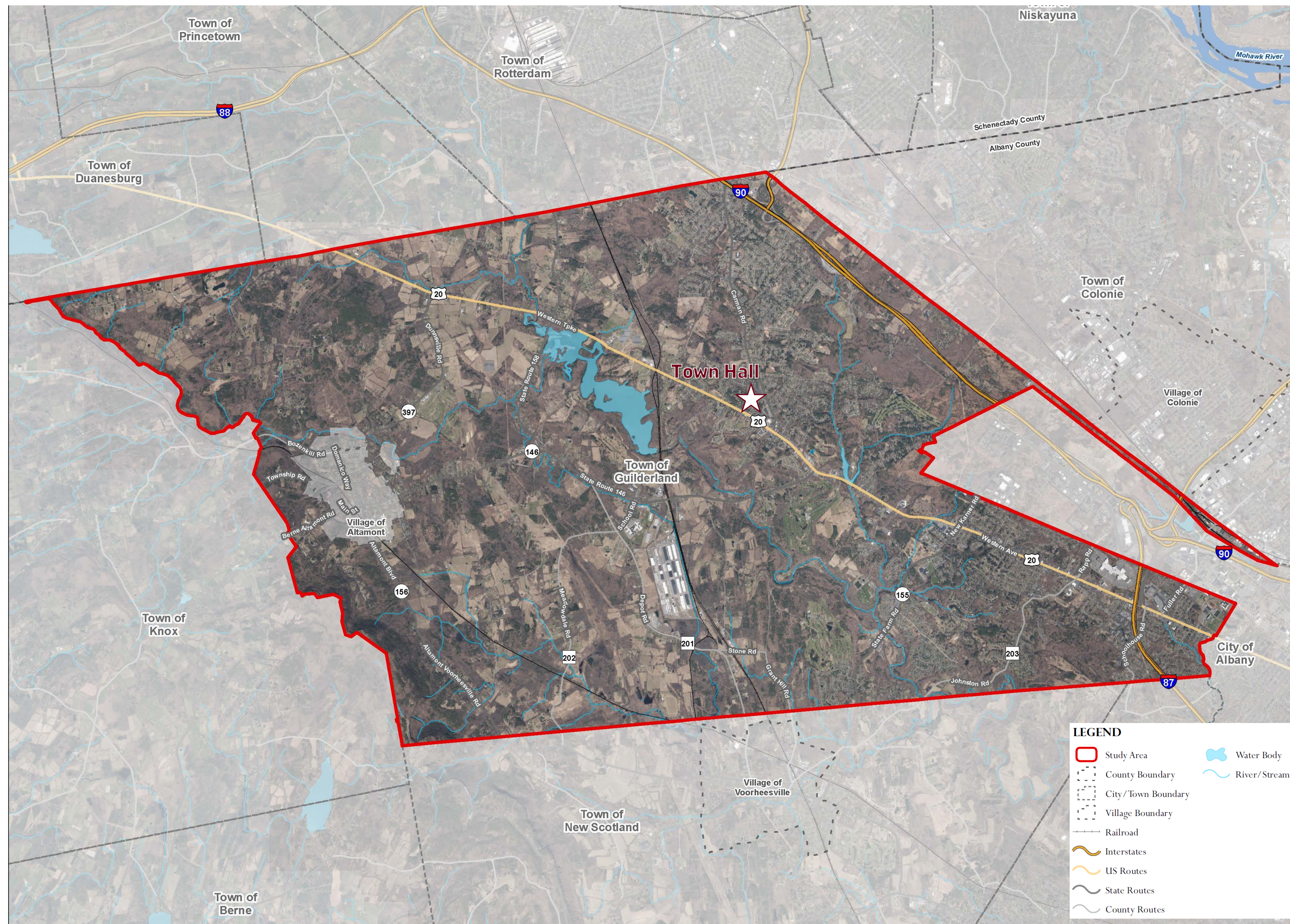


- ❖ Guilderland has a higher percentage of college-age residents than NY State and the nation.
- ❖ Guilderland also has a higher percentage of its population in the 65+ category than the State and nation.



# TOWN OF GUILDERLAND

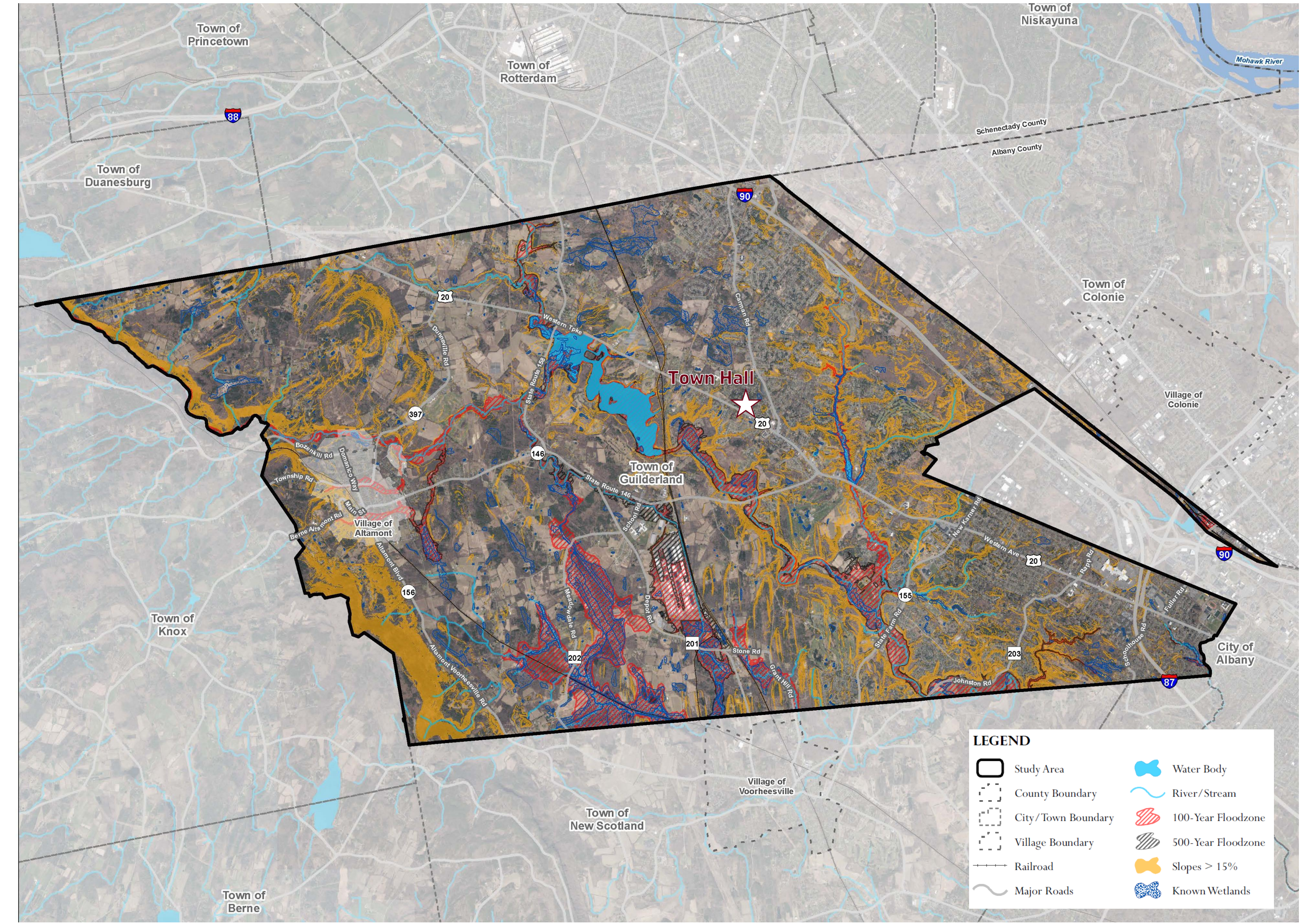
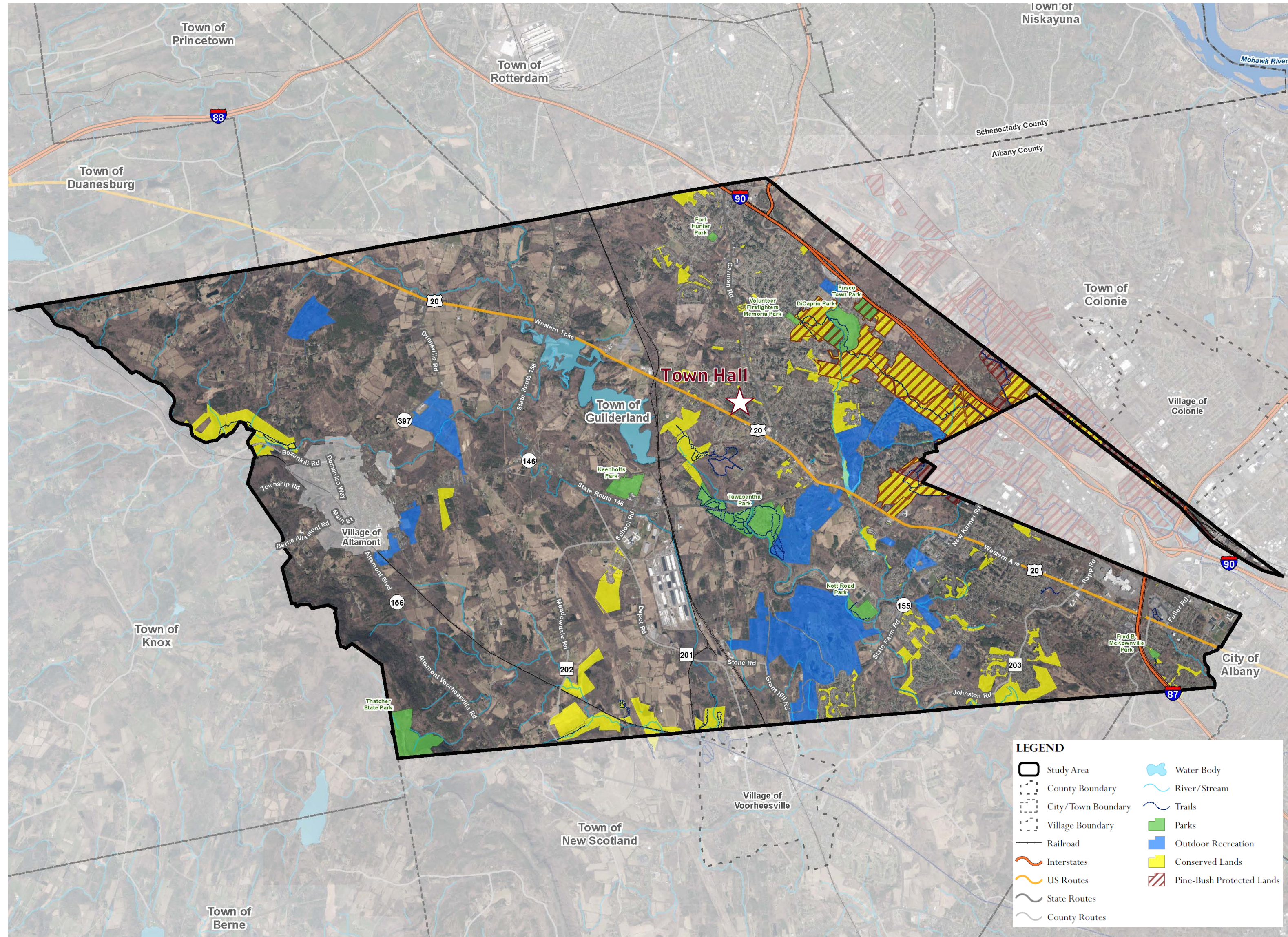
## PROJECT AREA & ZONING



- ❖ 58 square miles (37,621 acres)
- ❖ The project area is the entire Town of Guilderland. It does not include the Village of Altamont.
- ❖ Neighboring municipalities include: Towns of New Scotland, Knox, Duanesburg, Princetown, Rotterdam, Colonie, and Bethlehem; Villages of Colonie, Altamont, and Voorheesville; and the City of Albany.

- ❖ 16 Zoning Districts + 2 Residential Overlay Districts
- ❖ Largest Zoning Districts (by acreage)
  - ❖ RA 3 Rural Agricultural
  - ❖ RA 5 Rural Agricultural
  - ❖ R 15 Single-Family Residential





- ❖ Parks (Local, County, State) make up 1.5% of the Project Area
- ❖ Outdoor Recreation areas make up another 5% of the Project Area
- ❖ Conserved Lands (including Pine Bush Preserved Lands) make up 6.5% of the Project Area.

- ❖ Wetlands, steep slopes, and flood zones are environmental constraints to land use
- ❖ Steep slopes are present in 17.5% of the Project Area
- ❖ Known wetlands make up 5.5% of the Project Area
- ❖ FEMA's 100-year and 500-year flood zones make up a combined 10% of the Project Area.



3

# WHAT IS YOUR VISION?

**Describe what you want Guilderland to be like in 5, 10 or 20 years...**

Post-It Notes Here

Post-It Notes Here



4

# CHALLENGES AND CONCERNS

**Share your concerns and what you see as challenges for Guilderland.**

Post-It Notes Here

Post-It Notes Here



4

# OPPORTUNITIES AND STRENGTHS

**What opportunities and strengths do you see in Guilderland?**

Post-It Notes Here

Post-It Notes Here





# THE PLACES WE GATHER

...AND WHAT WE DO THERE

Place stickers on the map to show the places you gather in your community and what you do there...



My neighborhood



Socializing



Shopping



Religious & Spiritual



Dining



Education



Recreation



# 6

# SERVING THE GENERATIONS

What are your generational needs (services, housing, shopping, learning, healthcare, transportation, etc.)?

Traditionalists or Silent Generation:  
Born 1945 and before

Baby Boomers:  
Born 1946-1964

Generation X:  
Born 1965-1980

Millennials or Generation Y:  
Born 1981-1996

Generation Z:  
Born after 1996

Post-It Notes Here

Post-It Notes Here

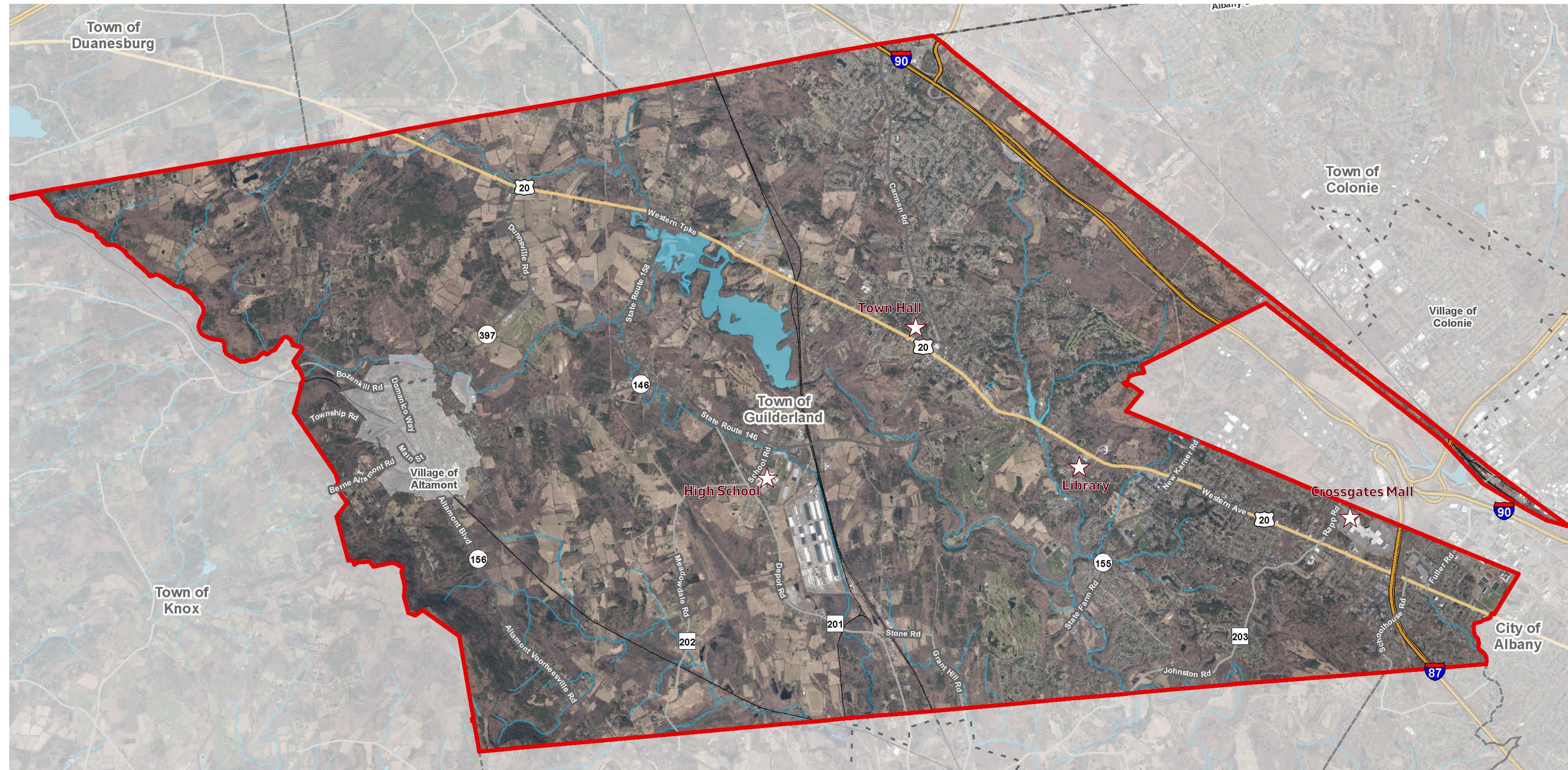
Post-It Notes Here

Post-It Notes Here

Post-It Notes Here



Map mobility in your community! Put a sticker on the map where you walk, bike or take public transportation.



Walk



Bike



Public Transportation



8



# IDEA CENTER

## ECONOMIC DEVELOPMENT & AGRICULTURE

Share your ideas about economic development in Guilderland.

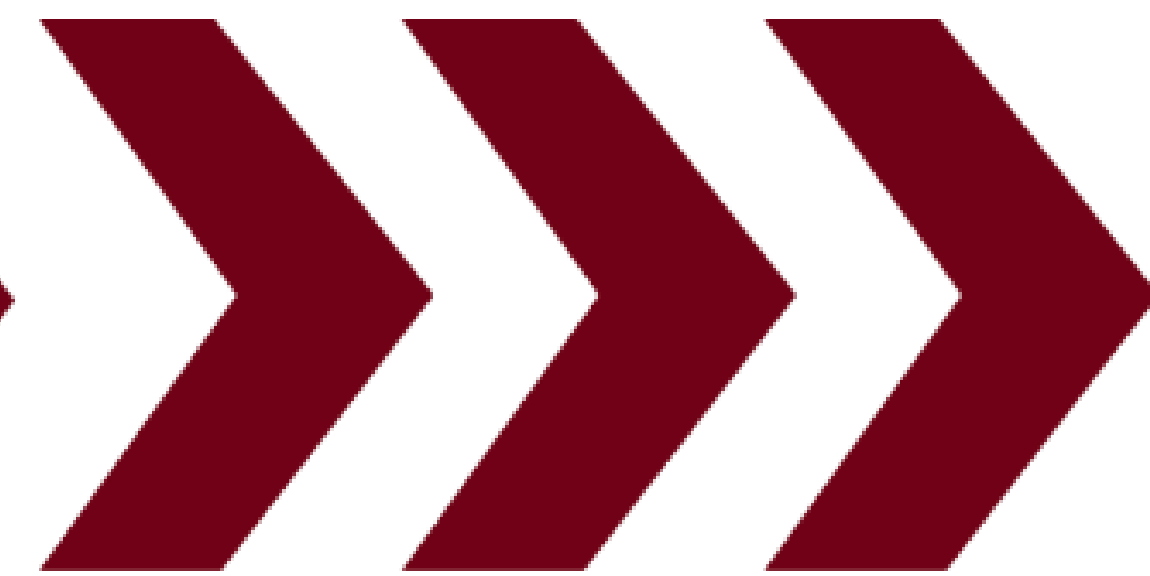
Share your ideas about agriculture in the community.

Post-It Notes Here

Post-It Notes Here



8



# IDEA CENTER

## INFRASTRUCTURE & TRANSPORTATION

Share your ideas about infrastructure (electric, water, sewer, etc.) in Guilderland.

Share your ideas about transportation and mobility (bicycles, pedestrians, vehicles, transit, accessibility and connectivity, etc.) in and around Guilderland.

Post-It Notes Here

Post-It Notes Here



8

# IDEA CENTER

## HISTORY & RECREATION

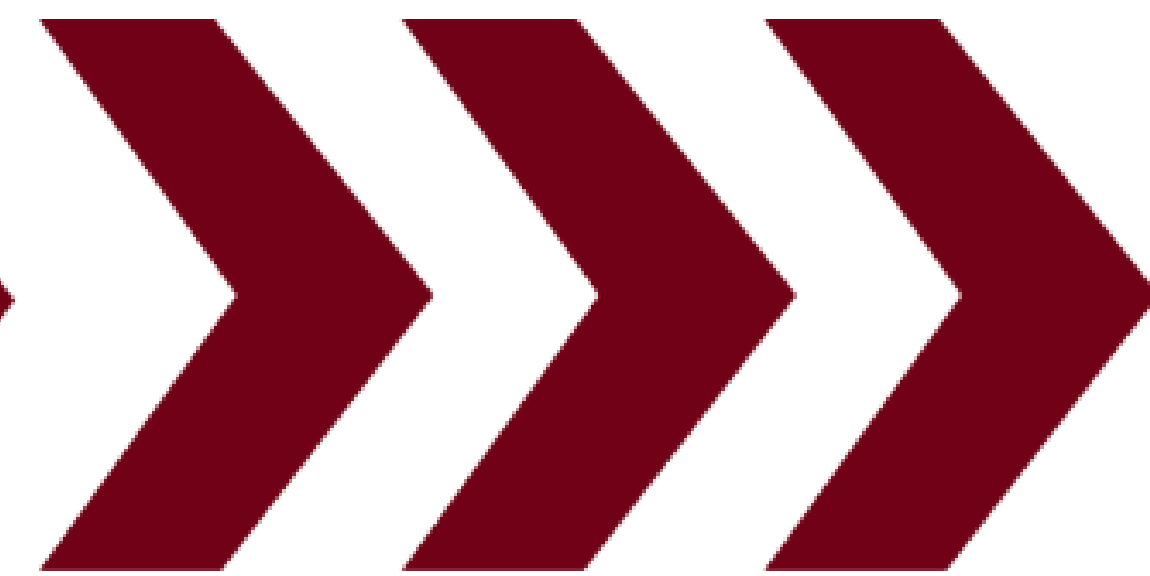
Share your ideas about history and recreation in Guilderland.

Post-It Notes Here

Post-It Notes Here



8



# IDEA CENTER

---

## NEIGHBORHOODS & HOUSING

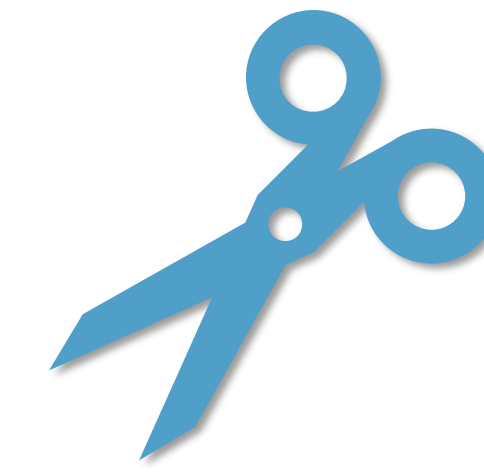
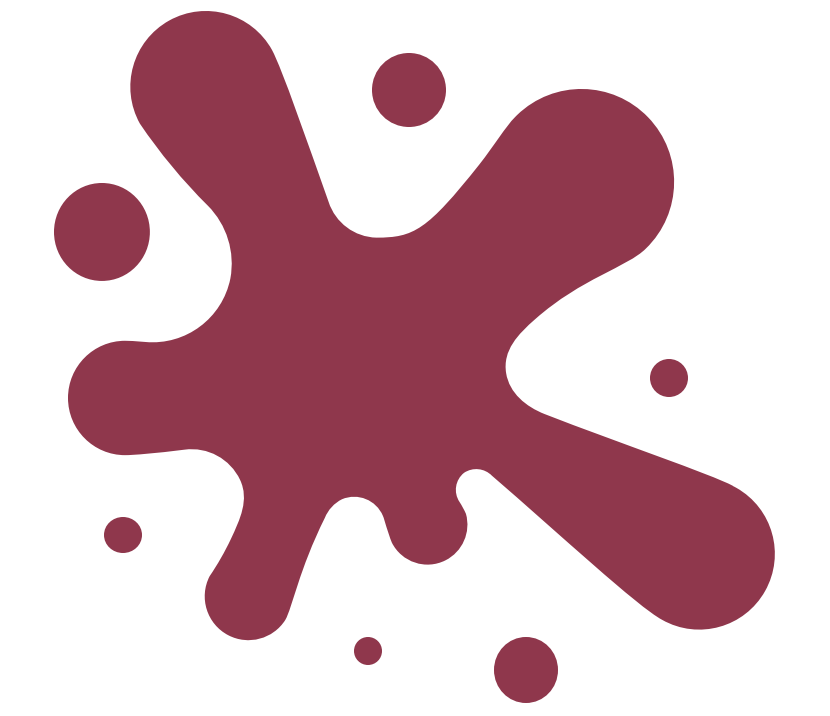
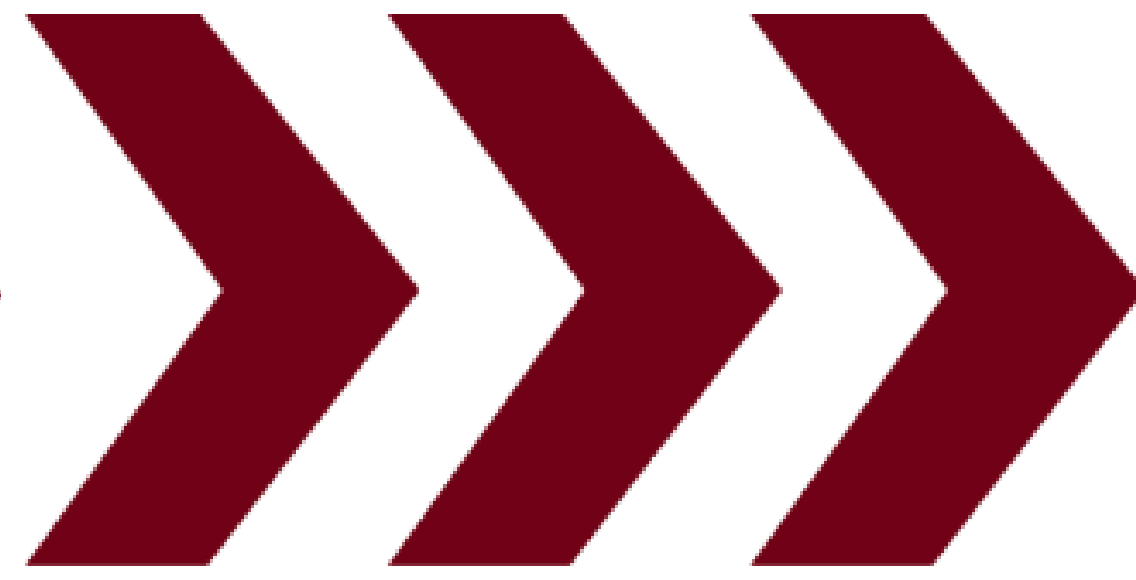
Share your ideas about Guilderland's community character, neighborhoods and housing types.

Post-It Notes Here

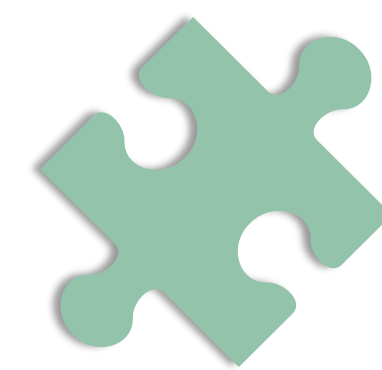
Post-It Notes Here



9



# KIDS CORNER





10

# TAKE THE SURVEY

Participate in the online community survey to provide more thoughts and ideas about your community!



Scan the QR code to take the survey on your smartphone or tablet!



Scan the QR code to take the survey on your smartphone or tablet!



# OTHER THOUGHTS AND IDEAS

Share any additional thoughts and ideas you have for Guilderland here!

Post-It Notes Here

Post-It Notes Here

